

REACT 350[®] Wide

CRASH CUSHIONS



REACT 350® Wide

The REACT 350® Wide is a redirective, non-gating crash cushion that consists of High Molecular Weight/High Density Polyethylene (HMW/HDPE) cylinders. It is tested to NCHRP Report 350 Test Level 1, Test Level 2, and Test Level 3.

The system has shown self-restoring characteristics and may regain much of its original shape and capacity when impacted within NCHRP Report 350 crash test standards.* The REACT 350® Wide crash cushion can be used to shield fixed objects with three system widths of 60" (1.525 m), 96" (2.440 m), and 120" (3.050 m).

BACK-UP STRUCTURE AND ATTACHMENTS

- Self-contained backup structure
- Concrete barrier(s)
- Bridge pier(s)
- Bridge parapet(s)
- Square Block(s)

FEATURES

- Sectional construction with energy-absorbing, potentially reusable HMW/HDPE cylinders.*
- Systems available for various lengths, widths, and speeds.
- Delivered preassembled.
- Optional cylinder covers available.
- Monorail base designed to help provide lateral strength.

ASSEMBLY AND MAINTENANCE

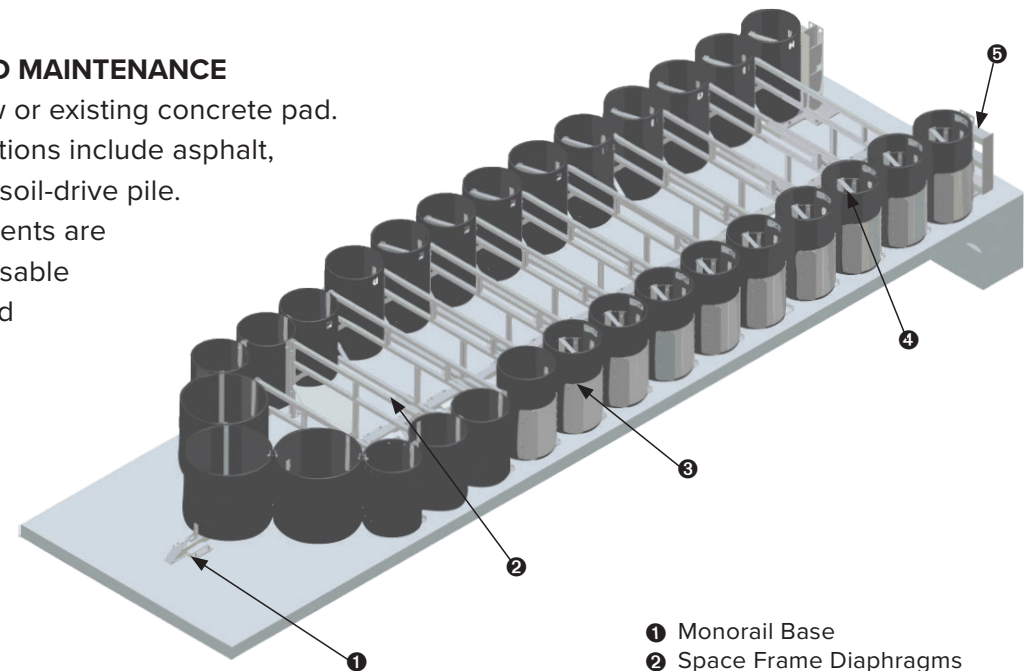
- Installs on new or existing concrete pad.
- Anchorage options include asphalt, concrete, and soil-drive pile.
- Major components are potentially reusable when impacted within NCHRP Report 350 crash test standards.*

SPECIFICATIONS

Typical 60" Width at Backup Shown

(Available in widths of 60", 96", & 120")

- 30' 10" Long (9.4 m) Self-Contained Backup Structure
- 30' 7" Long (9.2 m) Concrete Backup Structure



- 1 Monorail Base
- 2 Space Frame Diaphragms
- 3 HMW/HDPE Cylinders
- 4 Internal Struts
- 5 Backup

DISTRIBUTED BY

DRAFT
10-22-22

10-22

WWW.VALTIR.COM
1.888.323.6374